



Wat Phrasrirattana Sasadaram *The Temple of the Emerald Buddha*

Wat Phrasrirattana Sasadaram (Wat Phra Kaeo), or the Temple of the Emerald Buddha, situated within the Grand Palace, near Sanam Luang, is a sacred symbol of the Rattanakosin, or Bangkok, Dyansty and the most important temple in realm. It was built by King Rama I, the founder of the Chakri Dynasty, at the same time as the Grand Palace in 1782, when he established Bangkok as his capital, in order to serve as the palace chapel, in which traditional royal ceremonies would be conducted. It thus has a sanctuary for the performance of Buddhist rites, but no residences for monks.

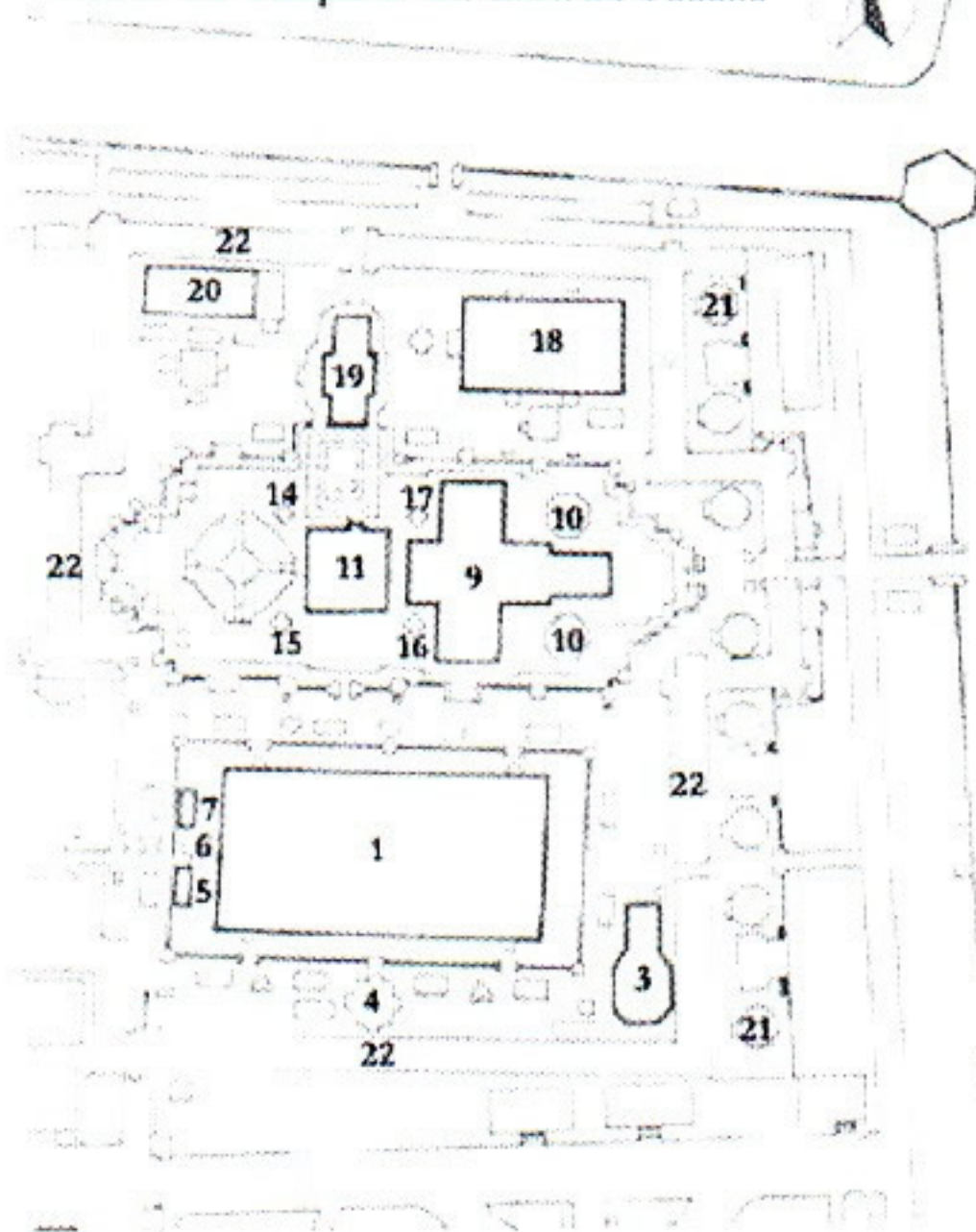
The temple is richly endowed with fine art and architecture. The Emerald Buddha image is enshrined in the phra ubosot, the exterior walls of which are covered with beautiful designs in gold leaf and glass, while the interior walls bear murals depicting the life of Buddha and other subjects.

The phra mondop, or library, is set on a high base surmounted by a stepped pyramid. Inside is reserved a chest containing the Tripitaka, the Buddhist sacred scripture.

The Royal Pantheon, or Prasat Thepbidon, has a high spire. Inside are enshrined statues of the eight previous kings of the Chakri Dynasty.

Next to phra mondop is a miniature replica of Angor Wat, which King Rama IV had constructed.

Plan of the Temple of the Emerald Buddha



Plan of the Temple of the Emerald Buddha

1. The ubosoth containing the Emerald Buddha.
2. Twelve small open pavilions.
3. Viharn of the Gandhara Buddha image.
4. Belfry.
5. Ho Rachapongsanusorn.
6. Phra Pothithat Piman.
7. Ho Rachapongsanusorn.
8. Figure of a seated hermit.
9. The Royal Pantheon.
10. Two gilt stupa.
11. Phra Mondop (the Library).
12. Phra Si Ratana Chedi.
13. Model of Angkor Wat.
14. Monument of kings Rama I, II and III.
15. Monument of kings Rama IV (King Mongkut).
16. Monument of kings Rama V (King Chulalongkorn).
17. Monument of kings Rama VI, VII, VIII and IX.
18. Ho Phra Monthien Tham (the Supplementary Library).
19. Viharn Yod.
20. Viharn Phra Nak.
21. Eight prang (towers).
22. Galleries.