

Wat Chana Songkram



Entry to the ubosot of Wat Chana Songkram.

Tucked away in the center of the backpacker are Wat Chana Songkram is the temple of Banglumpu. People often use this temple as a shortcut between Khao San Road and the river without ever stopping to take a closer look.

Wat Chana Songkram was built in the 18th century, the temple has recently been renovated.



The shady lanes of the temple housing area.

This temple is an old monastery which was built before the first reign of Rattanakosin that is before 1782. The former name of this temple is "Wat Klang Na"(temple in the paddy field).

Later, King Rama I gave the new name "Tong Pu"(name of a town in Myanmar) and then renamed again to be "Chana Songkram" which means winning a war.

If approaching the temple from the riverside area, you first pass through the shady courtyard (and parking lot) of the temple housing (kuti), where both the monks and lay workers for the temple live. The courtyard also usually has a few stalls for the tourists.

From the kuti, you pass under a bell tower (being renovated in February 2003) to reach the temple compound. The ubosot lies in a simple courtyard. If coming from the river, you are at the back of the ubosot. The gable ends of the ubosot are beautifully decorated in carved gilded wood and mirrored tiles.

Inside the ubosot, the altar is quite impressive with its gilded Buddha image in front of a large gilded fan, and ceremonial umbrella above. Of special note are the elephant tusks, one pair of which is ebony. Also of note in a side aisle is a small enthroned statue of King Taksin.

Getting There

The easiest way to reach Wat Chana Songkram is by boat to the Banglumpu Pier. From the pier, it's best to walk up past the Phra Sumen fort and through the park to Phra Arthit Road. Cross the road and head back down parallel to the river. You'll soon come to a large alley on your left with a few large guesthouses along it. Walk down this alley to the next road and the temple is right across the street. You'll be faced with a high blank wall, but just find one of the zig-zag gateways through it and into the kuti compound.

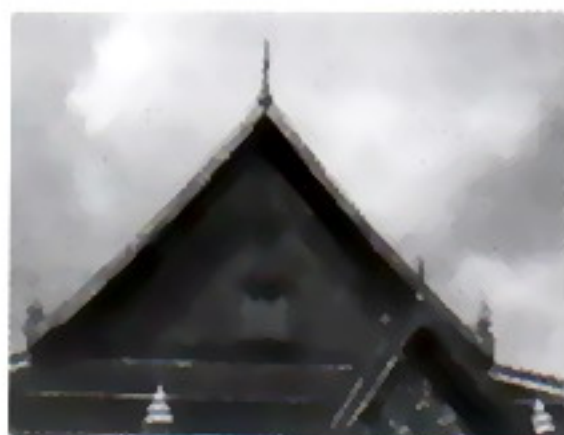
Pictures of Wat Chana Songkram



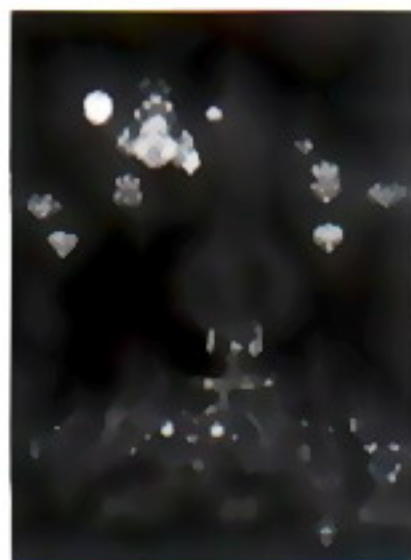
Outer wall of the ubosot with its gilded window frames.



Closeup of the ubosot's window.



Detailed view of the gable of the ubosot.



The alter within the ubosot.



Closeup of the alter.



Statue of King Taksin sitting on a throne.