

Transportation Gallery in the National Museum, Bangkok

Phra Thinang Pi Mook Mon Tien is one of the eleven Phra Vihara which was built by H.R.H. Prince Bovornrajao Surasinghanath. It was used for seeing the nobleman. It could pass to the lateral porches in both side; Phra Tinang Burapaphimook and Phra Tinang Thaksinaphimook. Now this room is used for royal vehicle demonstration of the King, the Queen and the nobleman in the past.



Phra Tinang Phuttan

Phra Tinang Phuttan is royal throne and used as palanquin for His Majesty the King in royal processions around the capital.



Phra Tinang Rachentharyan

Phra Tinang Rachentharyan is a royal palanquin carried by fifty-six men, used in the coronation ceremony of King Rama VII and the funeral ceremony of the Queens of King Rama VII



Throne

This throne belonged to H.R.H. Prince Wichaichan, the Prince successor of King Rama V. It was used for royal ceremony.

Bangkok period, the reign of King Rama V
Wood carving with gold gilt and decorated with glass

Length 137 cm.



The Sawetra Chatra throne of the palace to the front

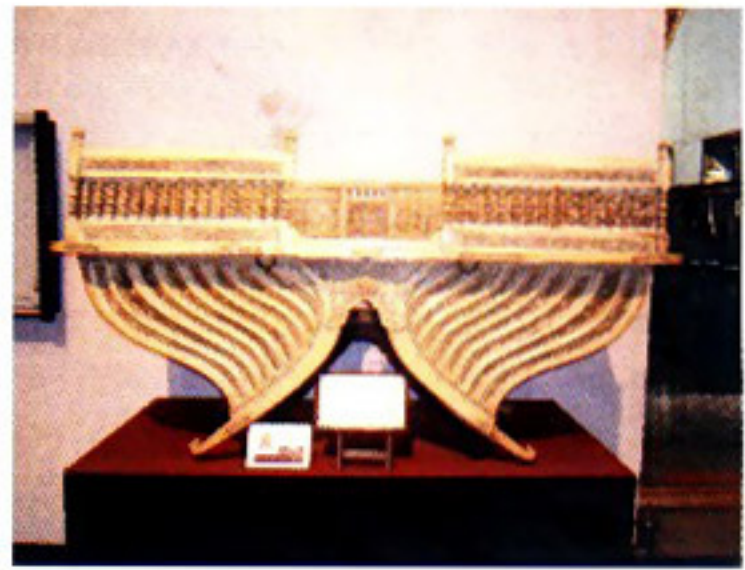
This carved throne was made by the order of the King Pinklao - the second king in the reign of King Rama IV for his coronation the throne was also used for other royal ceremonies. The carvings include the figure of garuda, a thepanom (Deva) and the emblem of King Pinklao. Its design is said to have been the same as the throne used in the palace of the front in the reign of King Rama II (Krom Phra Rajawangboworn Mahasenanurak) which had been kept in the Buddhaisawan chapel until its condition deteriorated beyond use.

Bangkok period, formally belonged to the palace of the front.



Palanquin or Saliang

The transportation for the King or the nobleman. It was carried by two or six or eight attendants



Ivory Howdah

Ivory Howdah carved in tradition Kranok (frame pattern) and floral designs was presented to King Rama V by the Prince of Chiangmai early in the 20th century. A seat used for travelling on elephant.



Howdah

Howdah is an elephant seat with a roof – a roofed howdah called a Koob – used by the Queen for travelling and in royal ceremonies.

Carried Hammock

The Carried Hammock, which was manned by two attendants, used by low ranking officers,(Phra and Luang) until the reign of King Rama V.

