

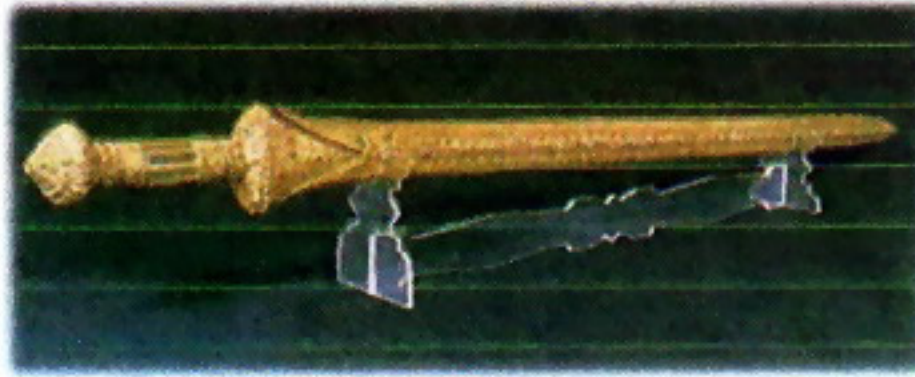
Chao Sam Phraya National Museum



History

Ayutthaya was the capital of Thailand for 417 years and was destroyed by the Burmese in 1767. What was left are the numerous magnificent ruins of the old capital and also a large number of ancient art objects. In 1956-1975, most of the temples and monuments have been explored and excavated by the Fine Arts Department. It has resulted in the discovery of a great number of art and antique objects. So the Fine Arts Department organized the sale of the Buddhist votive tablets found at Wat Ratchaburana and the proceeds were used to build a museum to house those national treasures. The museum was named "Chao Sam Phraya National Museum" to commemorate King Borommaraecha II (Chao Sam Phraya) who built Wat Ratchaburana in 1424. On December 26th, 1961, Their Majesties the King and the Queen presided over the inauguration ceremony of the first building of the Chao Sam Phraya National Museum, and the opening ceremony of the second building was presided over by The Minister of Education on January 30th, 1970.

Highlight Antiques



Royal sword with gold Scabbard and crystal handle.

Ayuthaya style, 15th century A.D. from the crypt of the main prang at Wat Ratchaburana



Carapisoned crouching elephant, gold encrusted with precious stones.

Ayuthaya style, 15th century A.D. from the crypt of the main prang at Wat Ratchaburana



Gold water vessel with Brahma's faces on the lid.

Ayuthaya style, 15th century A.D. from the crypt of the main prang at Wat Ratchaburana

The ground floor contains all of the ancient art objects which were found during the great excavation in 1956-1957. Most of these are Buddha images of different styles-Dvaravati, Lopburi, U-Thong, and Ayutthaya. The earliest Buddha image which was found in this area and displayed in the building is the white stone Buddha image in the attitude of preaching, Dvaravati style. The most beautiful and the most original Thai artistic expression is seen in the Buddha image in subdumprana, Sukhothai style. The most beautiful woodcarvings of the Ayutthaya period are also displayed. Such as the door panel showing divinites holding the swords, dyarapala from the niche of stupa at Wat Phra Si Sanphet, Phra Nakorn Si Ayutthaya.



Head of Buddha, Bronze
U-Thong style, 13th century A.D. from
Wat Dhamsarak, Ayutthaya



Sitting Buddha on the throne in
Attitude of preaching,
Dvaravati style 6-9th century
A.D.



Head of Crowned
Buddha, Bronze
Ayutthaya style, 15th century
A.D.

The first floor, The ancient golden objects found in the crypts of the main prang at Wat Ratchaburana are exhibited in one security room. A unique and very fine piece is the royal sword and scabbard, gold, decorated with precious stones. Another room contains Buddha relics found in the main stupa at Wat Mahathat. Lead and terra cotta Buddhist votive tablets of Sukhothai, Lopburi, and Ayutthaya style which were found at Wat Ratchaburana, Wat Mahathat, Wat Phra Ram are exhibited in the cases along the inner porch.



Painting on canvas representing the Buddha Flanked by two Disciples. The lower part represents Chulamani stupa in heaven and a monk. Pra Mahaj giving sermon to Indra and divinities.

Bangkok style, 19-20th century A.D.

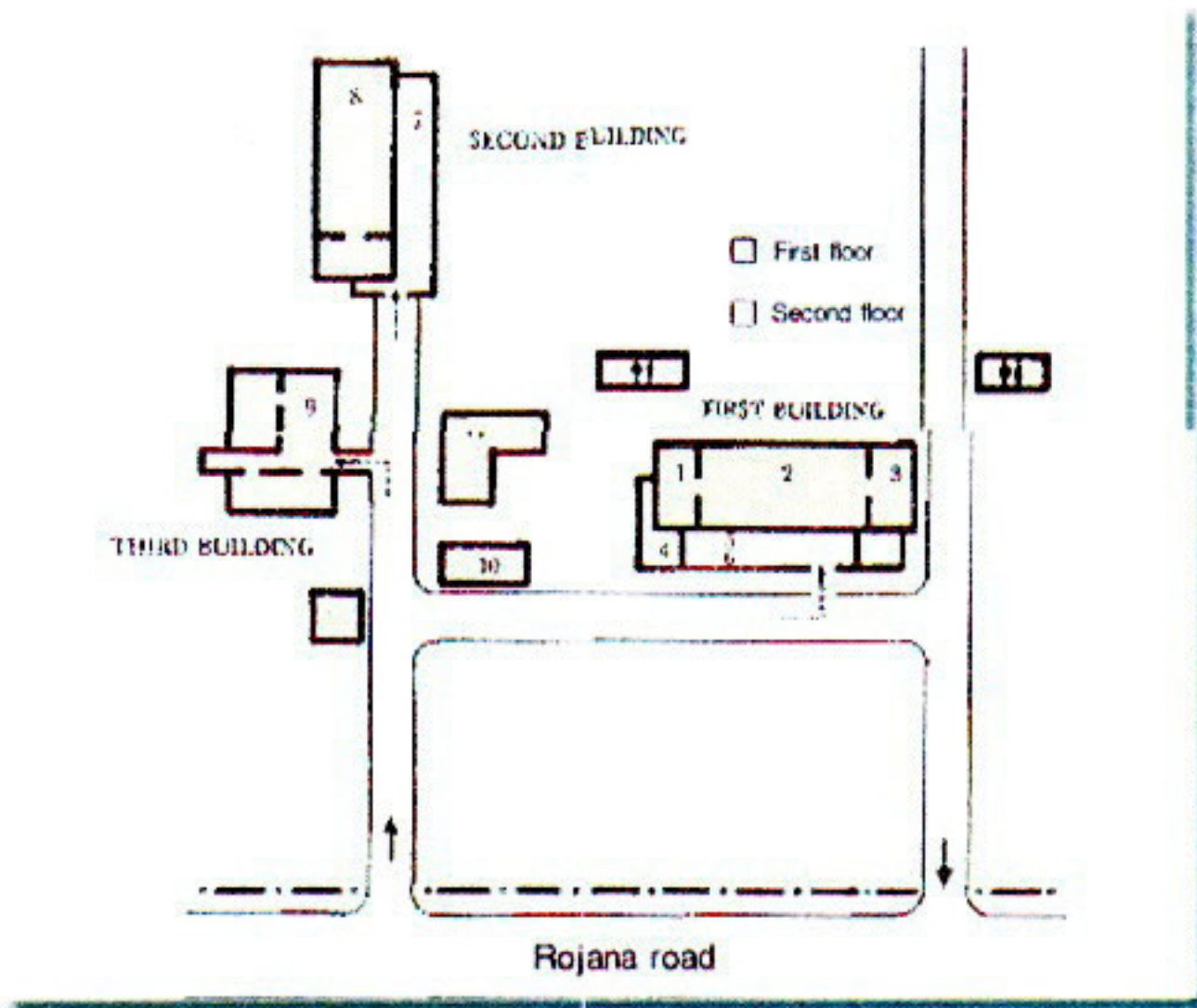
SECOND BUILDING

The display technique in this building is very different from the first one. All of the art objects found in Thailand dated from Dvaravati, Srivijaya, Lopburi, Chiengsaen or Lanna Sukhothai, U-Thong, Ayuthaya and Bangkok periods are displayed.

THIRD BUILDING (THAI HOUSES)

The third building is group of Thai style house in the central part of Thailand. The houses are built in the moat. Local Thai art and crafts, as well as ancient Thai daily life appliances are show in this area.

Museum Hours	09.00 am- 16.00 pm
Open	Wednesday - Sunday
Closed	Monday -Tuesday and National Holidays



Map of Gallery

1. Golden of Wat Mahathat
2. Budha Subdumg
3. Golden of Wat Rajchaburana
4. Thai Ceramics
5. Head of Buddha - Buddha
6. Wooden carved
7. Art in Thailand
8. Auditorium
9. Thai Houses
10. Ticket - Book shop
11. Office