



BRUSSELS - PETITS GILLES









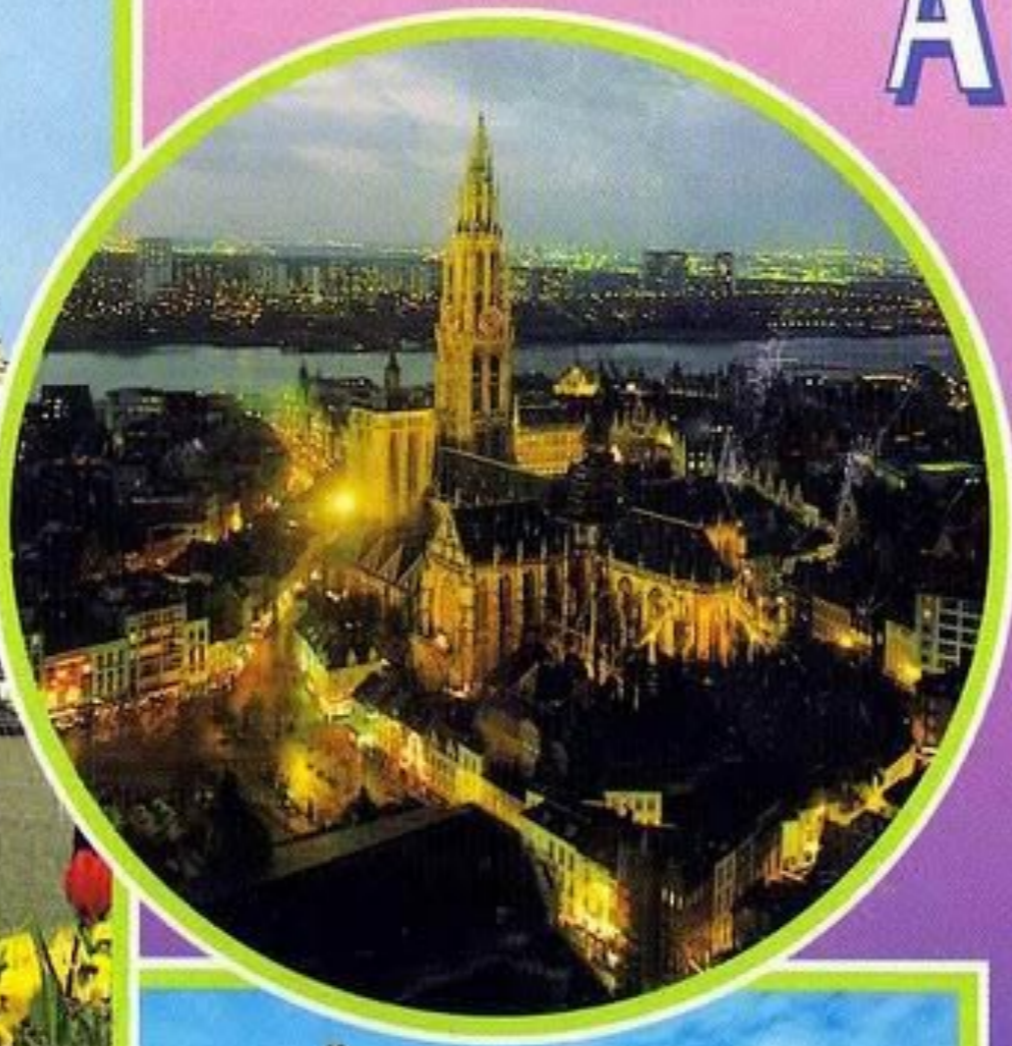


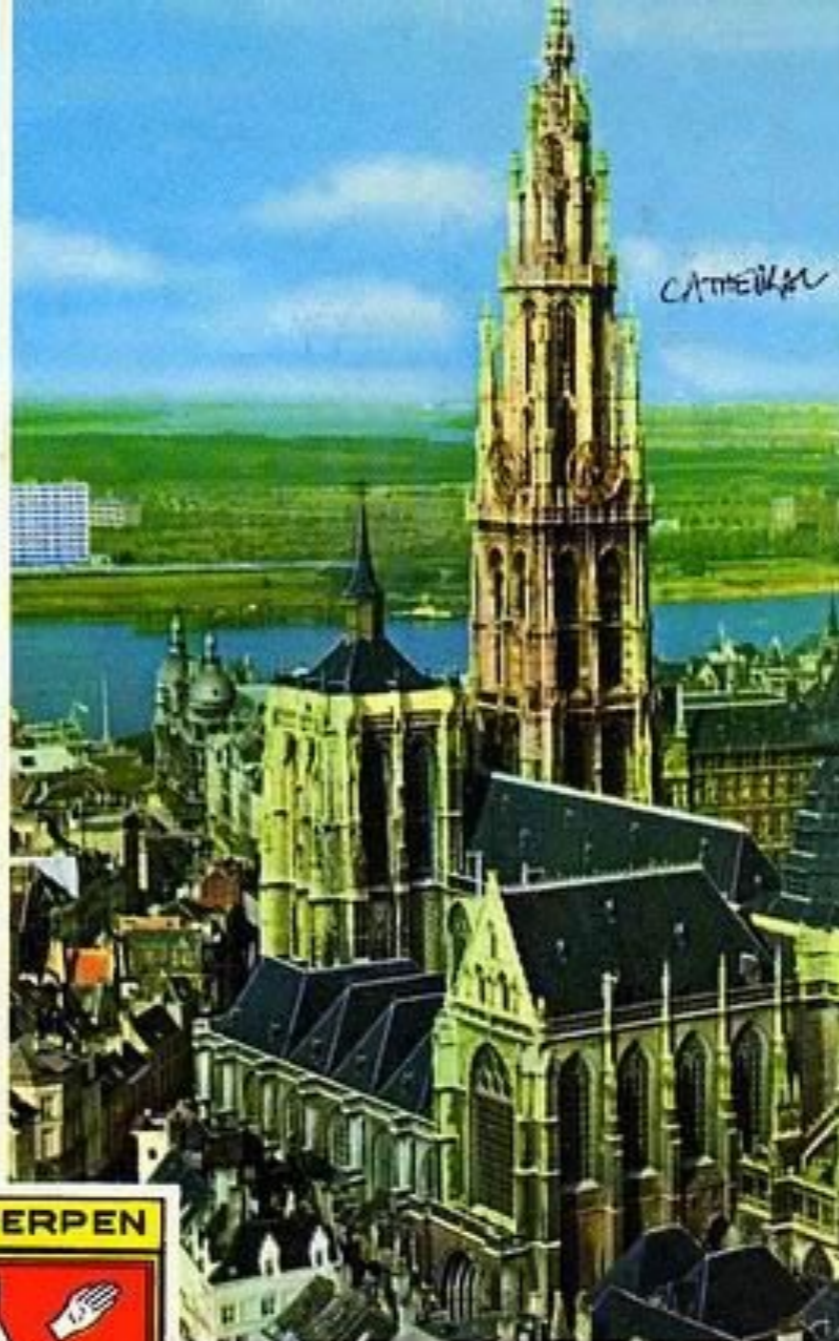






# ANTWERPEN

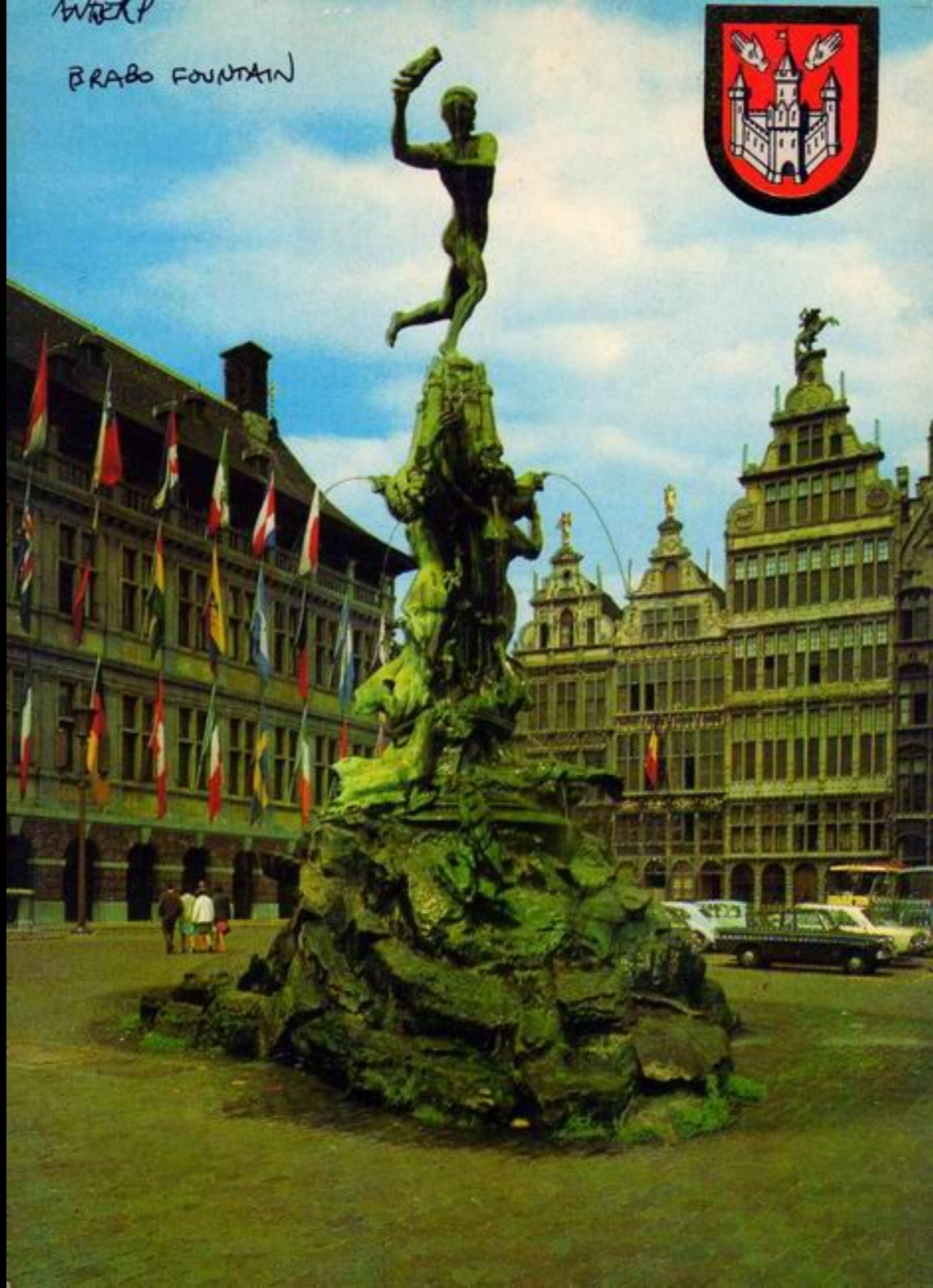






AVREX

BRABO FOUNTAIN





ANTWERP  
TOWN HALL



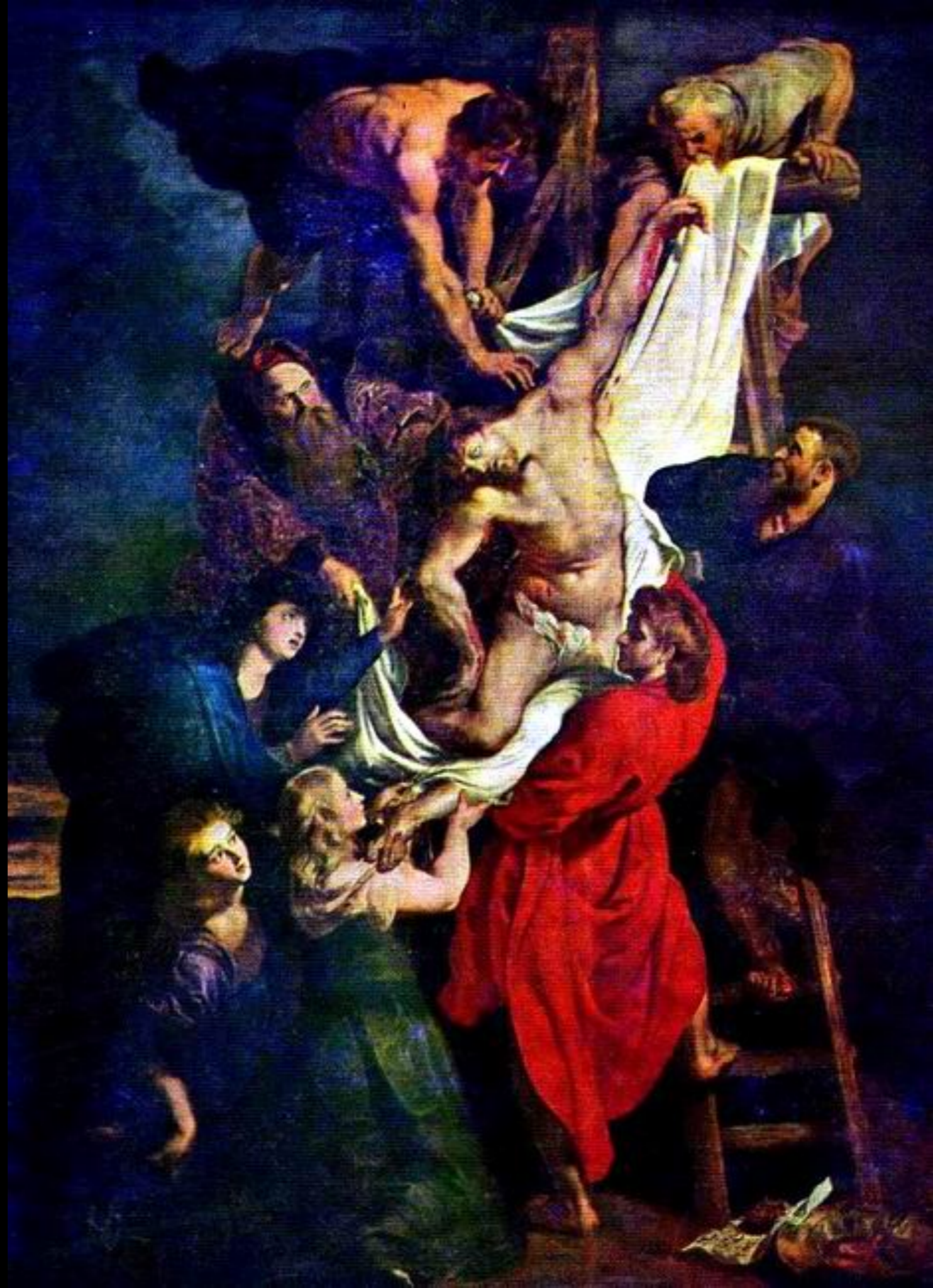
ANTWERP. ART MUSEUM

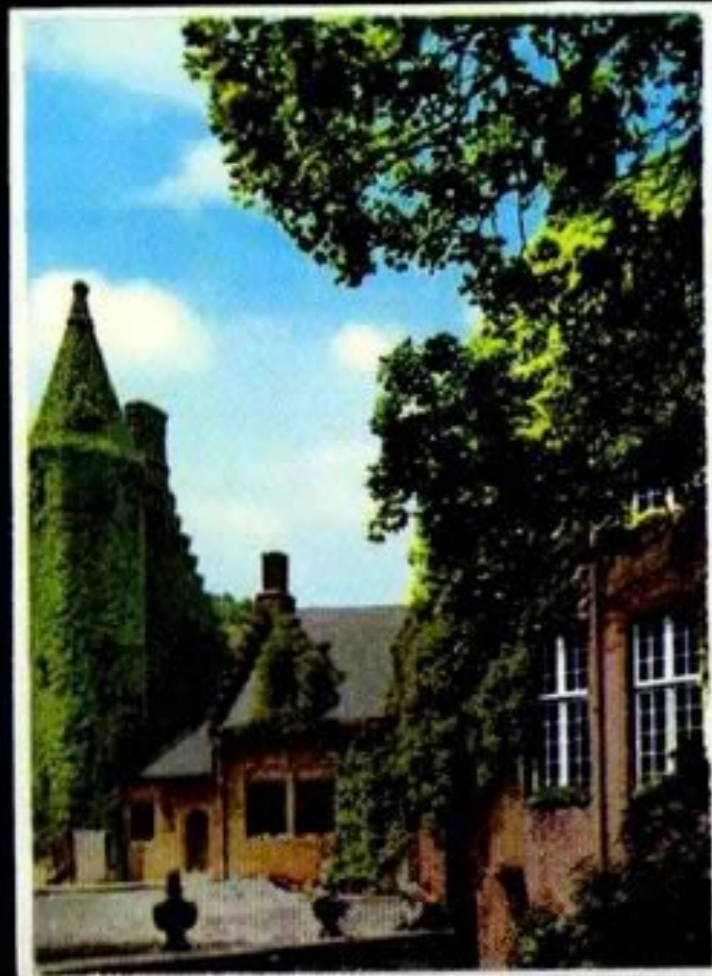
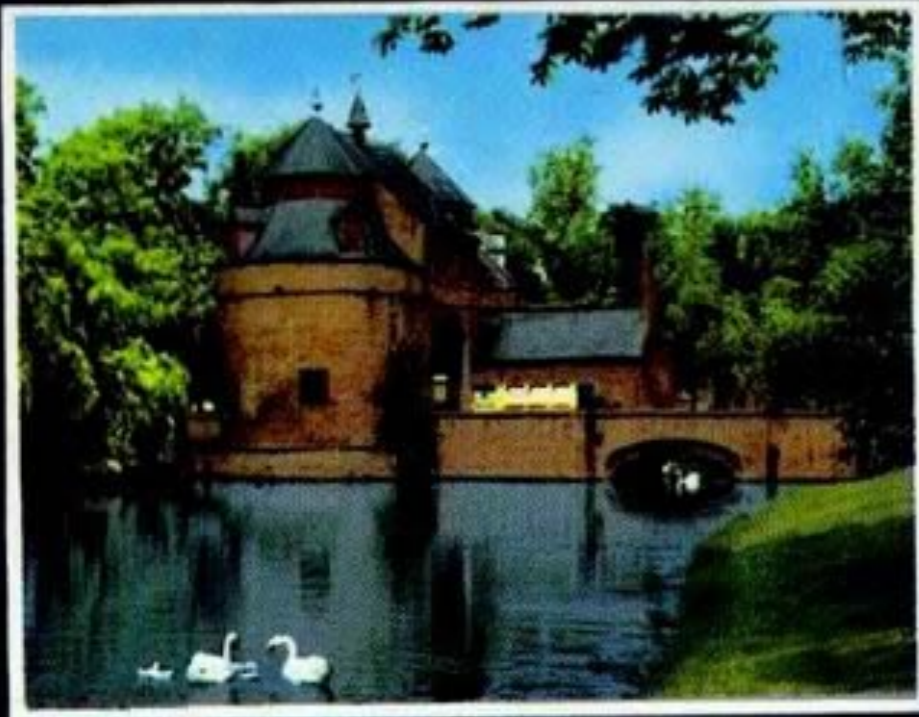




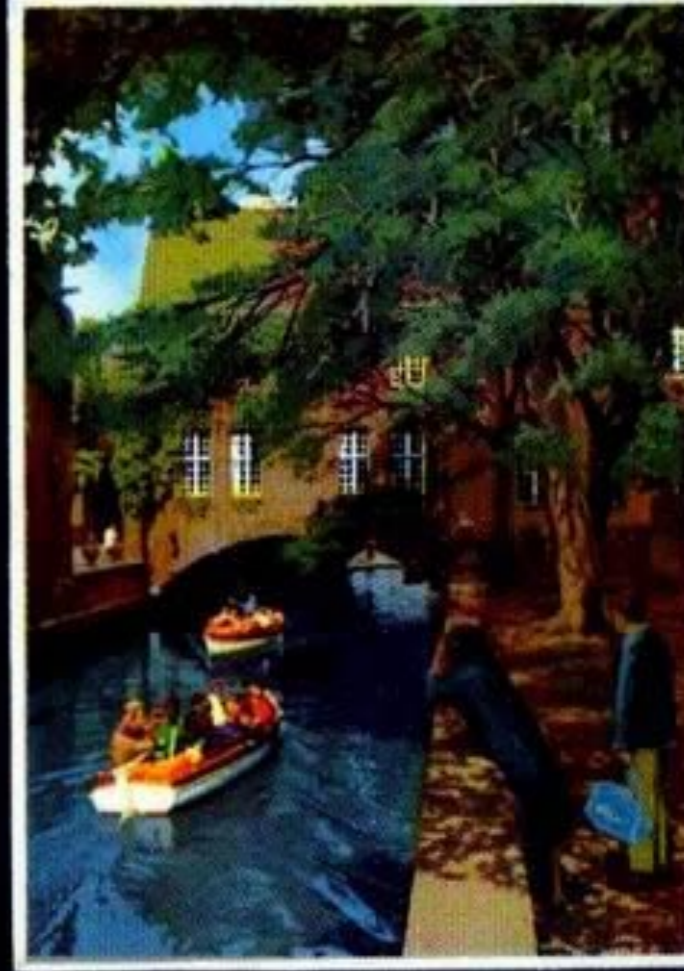
Peabody  
House







*Brugge*



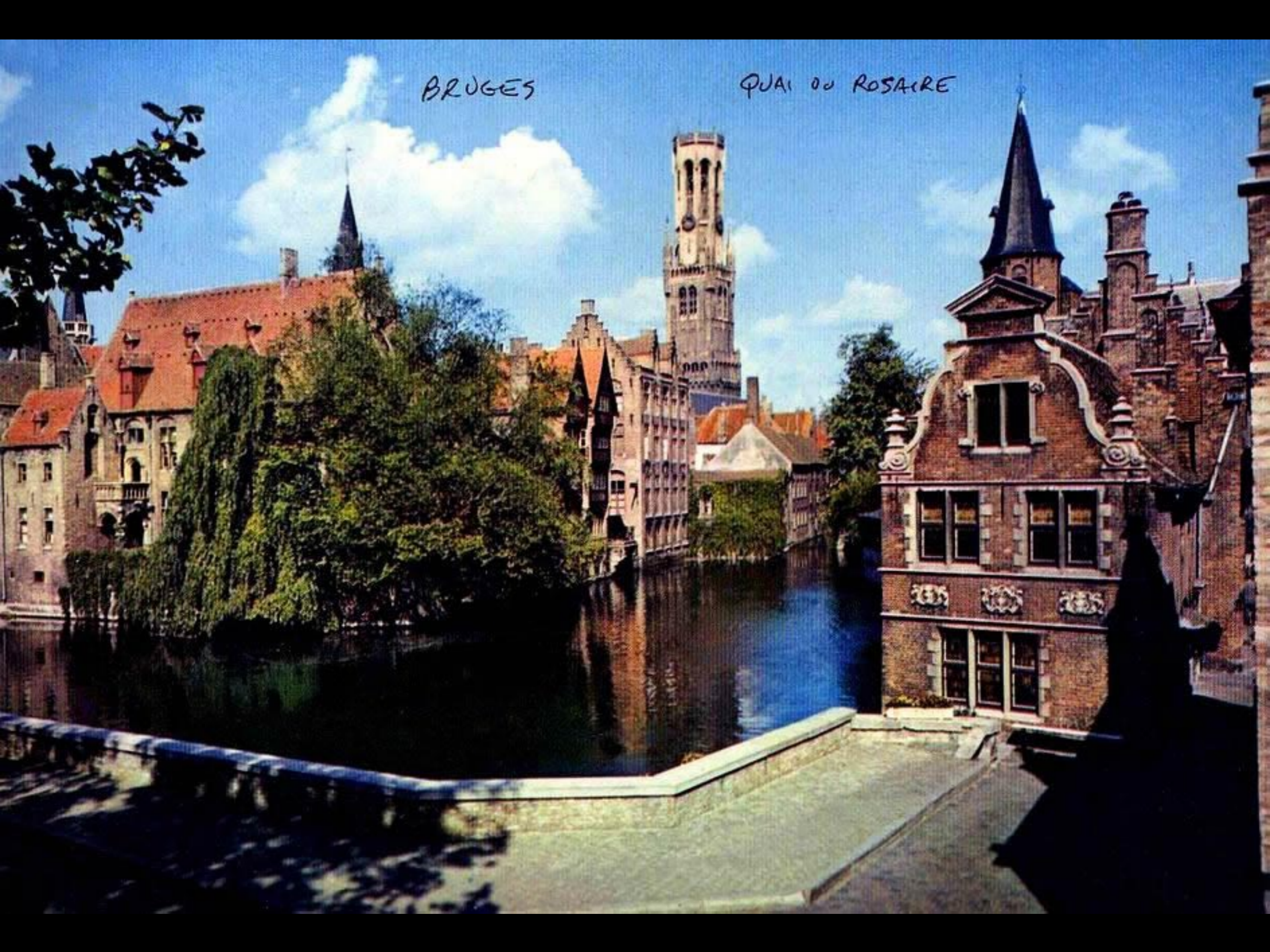
BRUGES. BELFRY + GOVERNMENT PALACE





BRUGES

QUAI DU ROSAIRE



BRUGES, BEL.

ST. SAUVICR'S CATHEDRAL





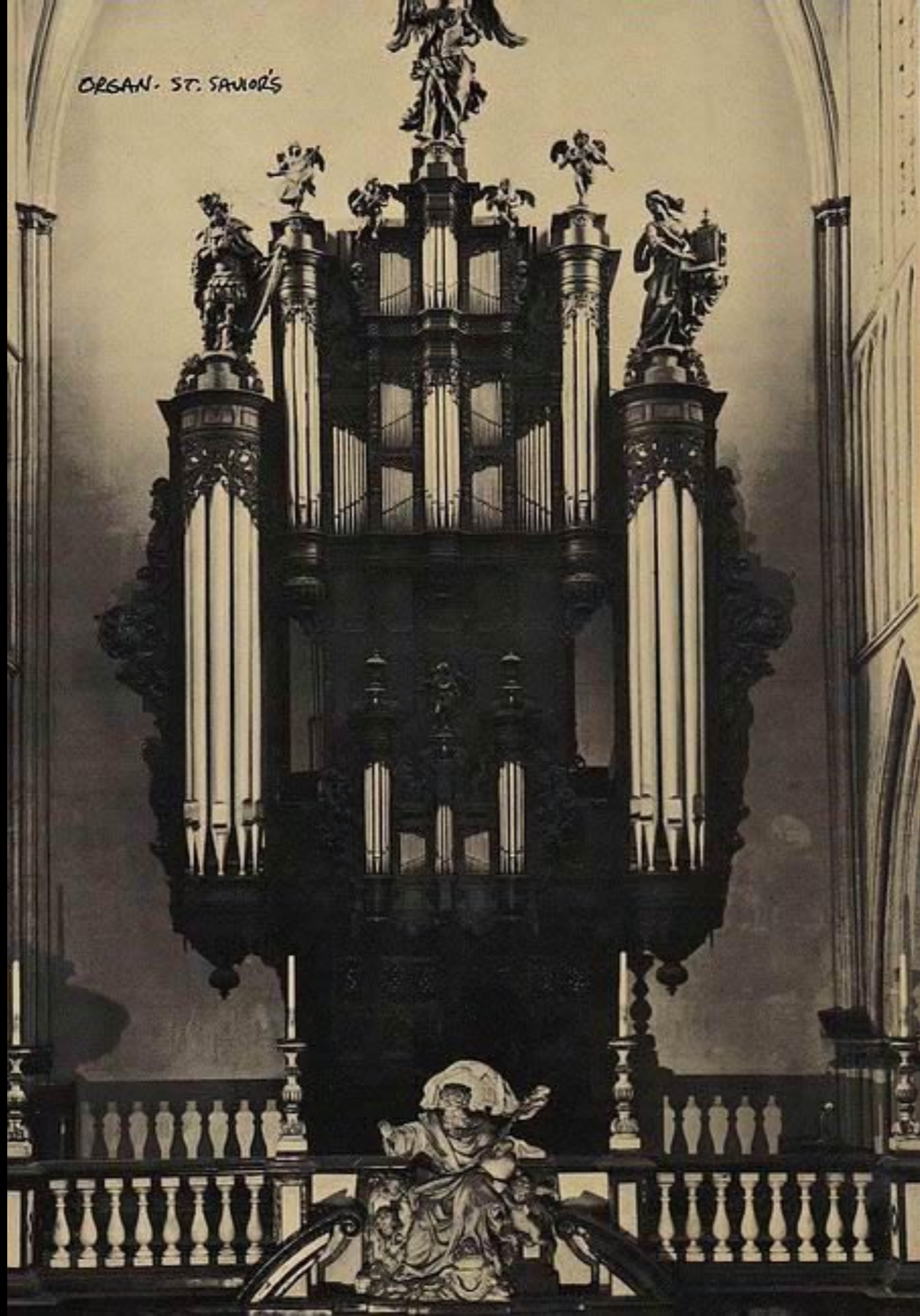
*Souvenir de Bruges  
Greetings from Bruges  
Grüesse aus Brügge*

QUAI DU ROSAIRE

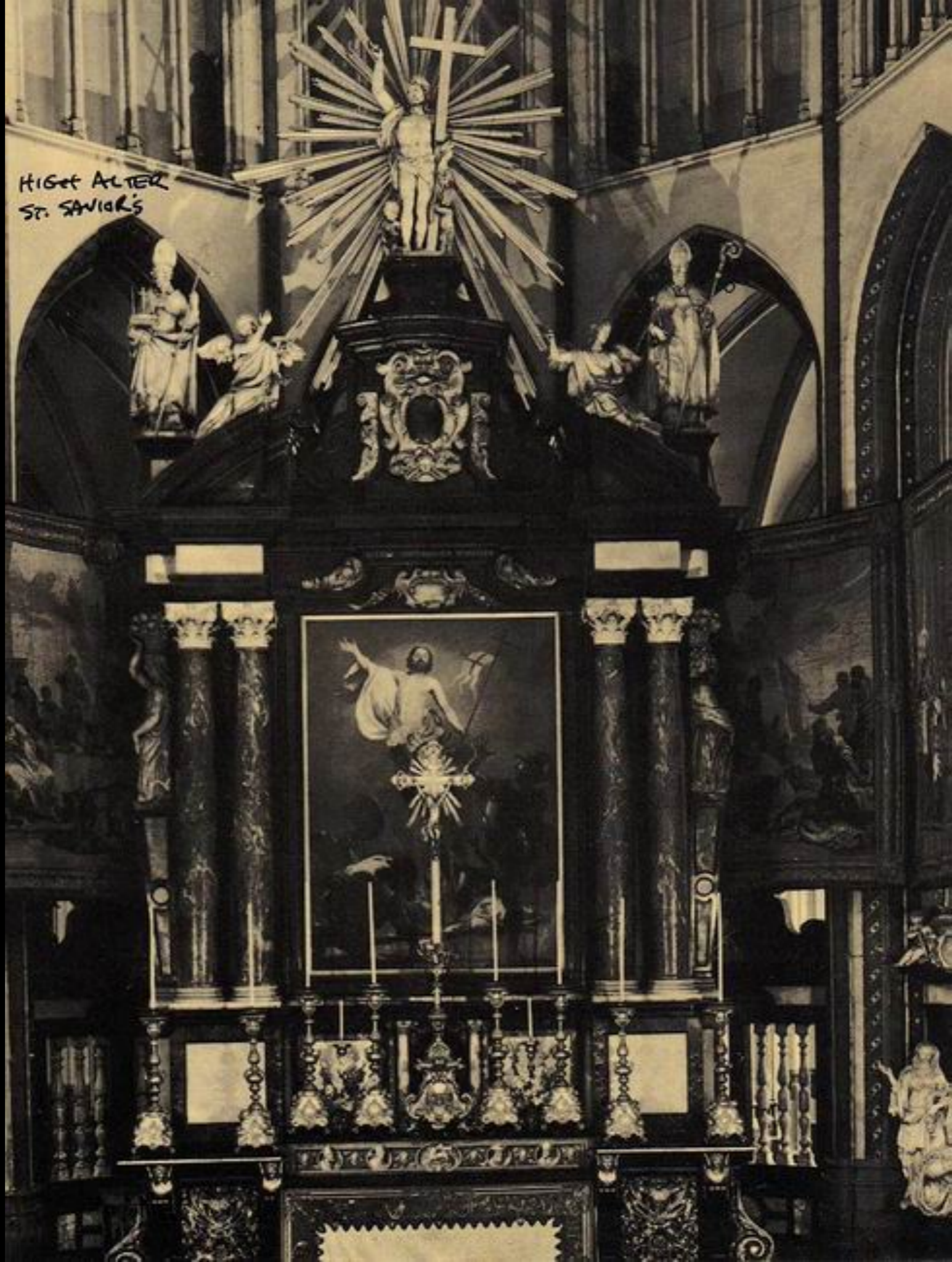




ORGAN - ST. SAUVORS



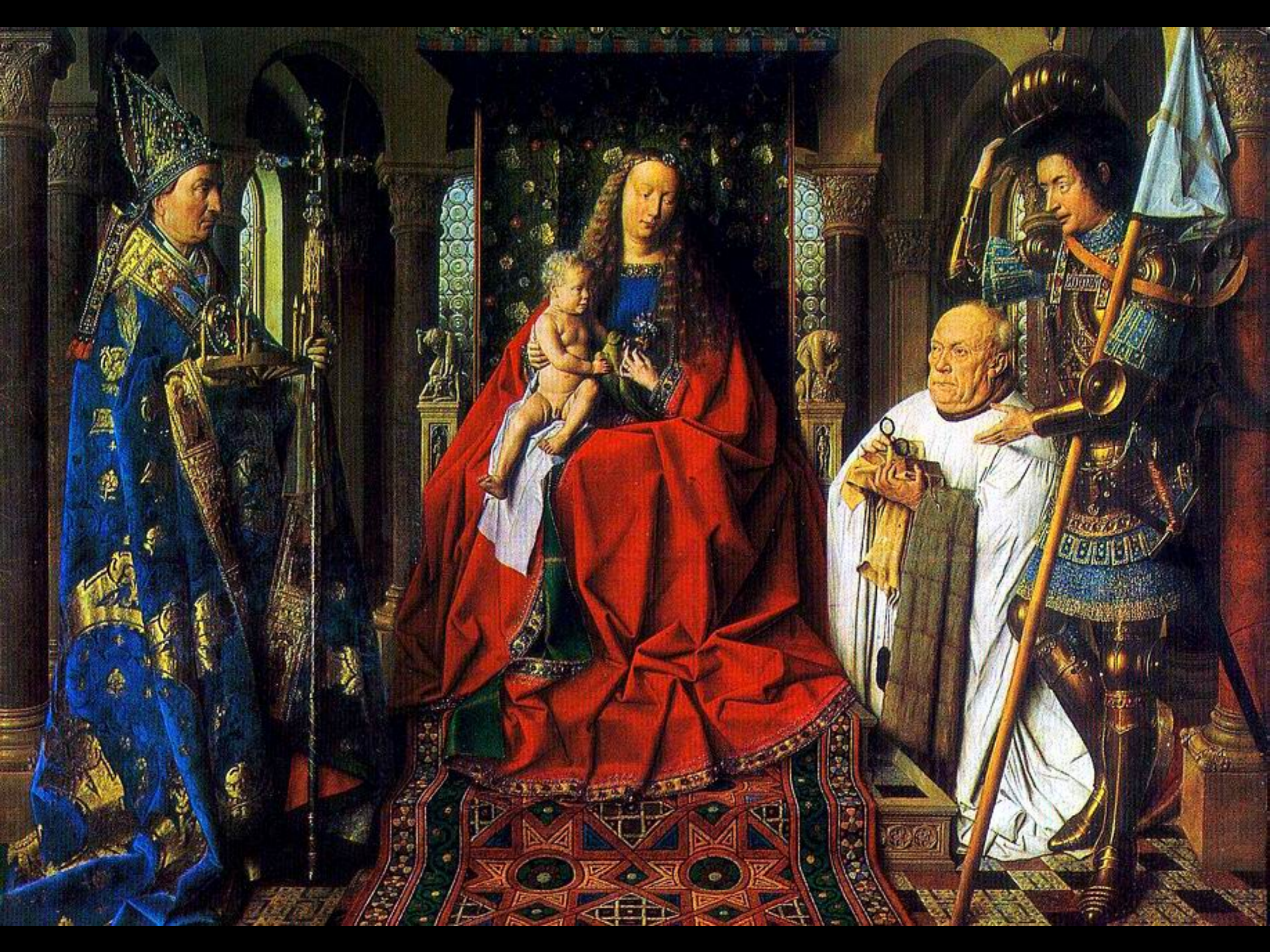


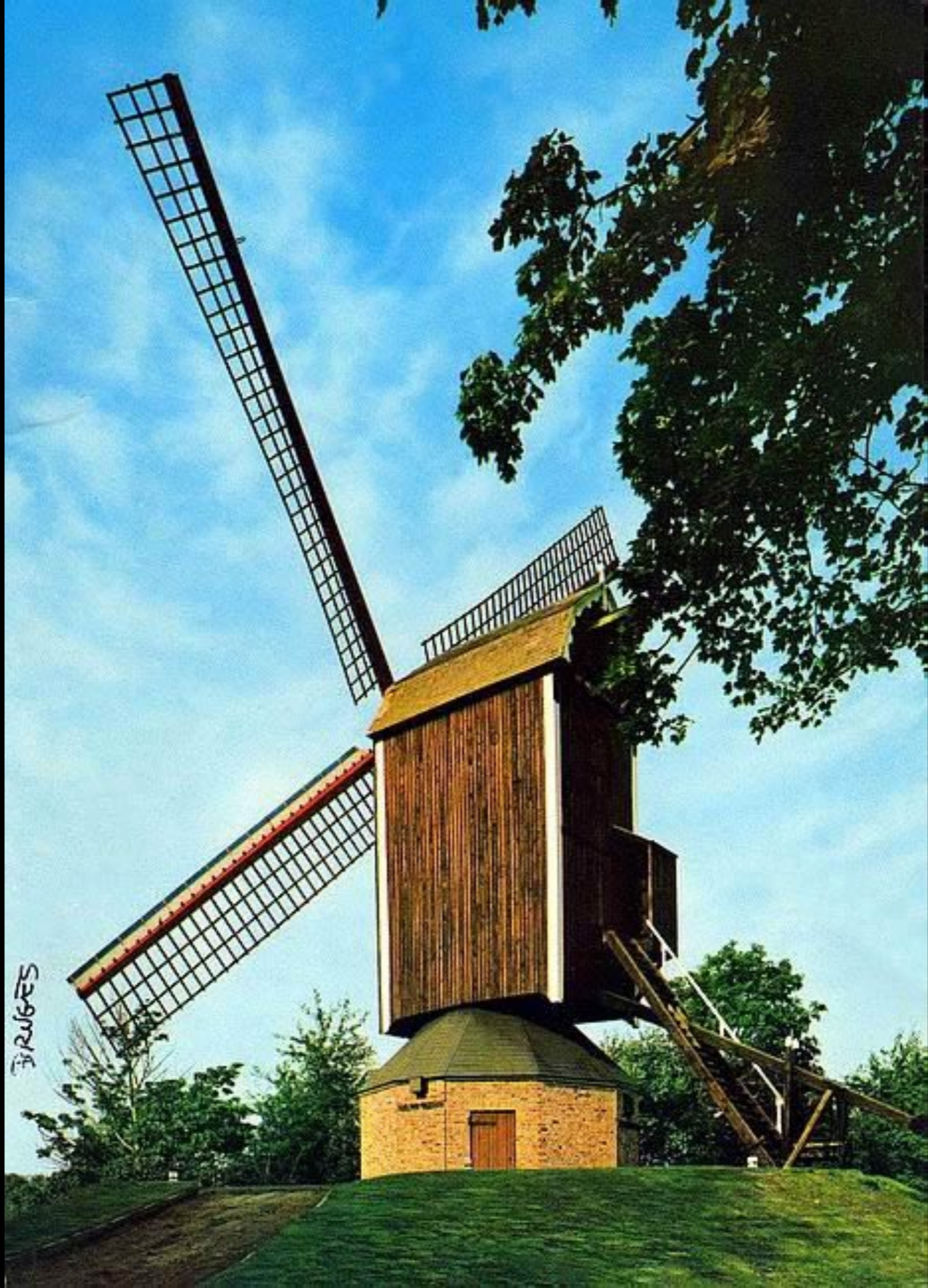


HIGH ALTAR  
ST. SAVIOUR'S



NOŚACIE DAM





FIRUGES



